

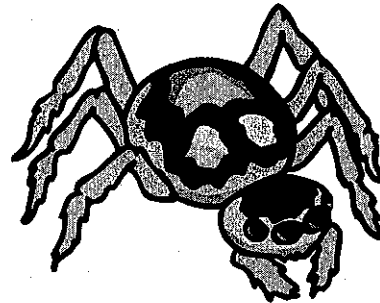
Spiders



Go to your public, school, and classroom libraries and check your home for any books about spiders. Collect all the different materials you can on this topic and bring them to school. Read and research all you can about spiders. Keep a bibliography on all the books you read and record them on your "Splendid Spiders" chart.

Create a diagram of a spider of your choice. Label the parts. Consider creating a three-dimensional model; if you decide to create a three-dimensional model, examine some soft sculpture educational toys. Often these toys will have parts that can be removed to show something that is otherwise hidden. Be sure to include:

- Eyes
- Poison fangs
- Pedipalps
- Abdomen
- Air openings
- Spinnerets



Write "An Amazing Spider Fact Book" based on your research. Try to identify facts that will "astound and amaze" your reader. Plan on using fancy type-faces and exclamation points to help emphasize the "incredible" nature of your findings. Include illustrations in your book.

Make a mobile of different kinds of spiders. Your spiders should be detailed and accurately colored. Since many spiders are very small, plan to make each spider at least twice their actual size. Investigate different materials and select the one best suited to your project.



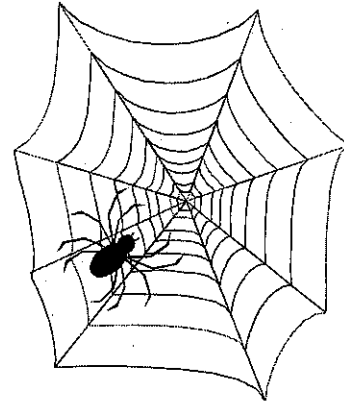
Make a flip-book of a spider spinning a web, then capturing and storing the prey caught in the web.

Read *Charlotte's Web*, either independently, with an adult, or with a friend. Create an illustrated book report to share with your class. Ask your teacher for samples of different styles of book reports and select the style you feel most comfortable with.

Make a spider "career" chart. Explain why a spider is like an:

- Engineer
- Pilot
- Telegrapher
- Fisherman
- Hunter

Can you think of any others?



Investigate the spinnerets of a specific web-spinning spider. Create a detailed drawing that shows how the spinnerets work.

Make your own "Web of Danger" game. You will need to make playing cards and a game board. Decide if your playing cards will be math problem cards or spider trivia cards.

